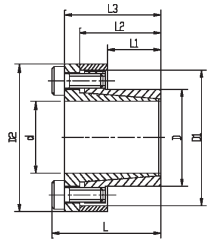


Type 110



Designation	d	D	L ₁	L ₂	L ₃	L	D ₂
	mm	mm	mm	mm	mm	mm	mm
110 006x014	6	14	10.0	18.5	23.5	25.5	25
110 007x015	7	15	12.0	21.5	25.5	29.5	27
110 008x015	8	15	12.0	21.5	25.5	29.5	27
110 009x016	9	16	14.0	23.5	27.5	31.5	28
110 010x016	10	16	14.0	23.5	27.5	31.5	28
110 011x018	11	18	14.0	23.5	27.5	31.5	32
110 012x018	12	18	14.0	23.5	27.5	31.5	32
110 013x023	13	23	14.0	23.5	27.5	31.5	39
110 014x023	14	23	14.0	23.5	27.5	31.5	39
110 015x024	15	24	16.0	29.5	36.5	42.5	45
110 016x024	16	24	16.0	29.5	36.5	42.5	45
110 017x025	17	26	19.0	32.5	39.5	45.5	47
110 018x026	18	26	19.0	32.5	39.5	45.5	47
110 019x027	19	27	19.0	32.5	39.5	45.5	49
110 020x028	20	28	19.0	32.5	39.5	45.5	50
110 022x032	22	32	26.0	39.5	46.5	52.5	54
110 024x034	24	34	26.0	39.5	46.5	52.5	56
110 025x034	25	34	26.0	39.5	46.5	52.5	56
110 028x039	28	39	25.5	39.5	46.5	52.5	61
110 030x041	30	41	25.5	39.5	46.5	52.5	62
110 032x043	32	43	25.5	39.5	46.5	52.5	65
110 035x047	35	47	31.5	45.5	52.5	58.5	69
110 038x050	38	50	31.5	45.5	52.5	58.5	72
110 040x053	40	53	31.5	45.5	52.5	58.5	75
110 042x055	42	55	31.5	45.5	52.5	58.5	78
110 045x059	45	59	45.0	62.5	71.0	79.0	86
110 048x062	48	62	45.0	62.5	71.0	79.0	87
110 050x065	50	65	45.0	62.5	71.0	79.0	92
110 055x071	55	71	55.0	72.5	81.0	89.0	98
110 060x077	60	77	55.0	72.5	81.0	89.0	104
110 065x084	65	84	55.0	72.5	81.0	89.0	111
110 070x090	70	90	65.0	86.5	96.5	106.5	119
110 075x095	75	95	65.0	86.5	96.5	106.5	126
110 080x100	80	100	65.0	86.5	96.5	106.5	131
110 085x106	85	106	65.0	86.5	96.5	106.5	137
110 090x112	90	112	65.0	86.5	96.5	106.5	144
110 095x120	95	120	65.0	86.5	96.5	106.5	149
110 100x125	100	125	65.0	86.5	96.5	106.5	154

Order: 110 dxD (e.g.: 110 040x053)

Required surface quality:friction coefficient $\mu \geq 0.12$

Surface roughness Rz ≥ 16

Shaft/hub h8/H8

Locking screws DIN912-12.9

*) at Mt = 0

**) at Ft = 0

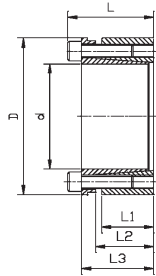
Dimensions may change according to position of screws.

- on request

D ₁	Axial force Ft*	Torque Mt**	Contact pressure shaft P	Contact pressure hub P ₁	Lockings screws qty.	Lockings screws size	Lockings screws tightening torque Ts	Weight
mm	kN	Nm	N/mm ²	N/mm ²			Nm	kg
23	6	17	284	122	3	M 3	3	0.040
24	7	24	255	119	3	M 4	5	0.060
24	7	28	223	119	3	M 4	5	0.050
25	7	31	170	96	3	M 4	5	0.060
25	7	35	153	96	3	M 4	5	0.060
28	7	38	139	85	3	M 4	5	0.065
28	9	56	170	114	4	M 4	5	0.070
35	9	60	157	89	4	M 4	5	0.110
35	9	65	146	89	4	M 4	5	0.100
40	21	157	269	168	4	M 6	17	0.220
40	21	168	252	168	4	M 6	17	0.220
42	21	178	200	130	4	M 6	17	0.235
42	21	189	188	130	4	M 6	17	0.240
43	21	199	179	126	4	M 6	17	0.260
44	21	210	170	121	4	M 6	17	0.270
48	21	231	113	77	4	M 6	17	0.340
50	31	377	155	109	6	M 6	17	0.360
50	31	393	149	109	6	M 6	17	0.350
55	31	440	135	97	6	M 6	17	0.480
57	31	472	114	83	6	M 6	17	0.480
59	42	671	142	106	8	M 6	17	0.470
62	42	733	105	78	8	M 6	17	0.580
66	42	796	97	74	8	M 6	17	0.610
69	75	1505	165	125	8	M 8	41	0.680
71	75	1580	157	120	8	M 8	41	0.760
80	75	1693	103	78	8	M 8	41	1.200
81	75	1806	96	75	8	M 8	41	1.200
86	75	1881	93	71	8	M 8	41	1.400
92	85	2328	77	60	9	M 8	41	1.600
98	85	2539	71	55	9	M 8	41	1.800
105	85	2751	66	51	9	M 8	41	2.100
113	136	4776	83	65	9	M10	83	3.000
119	136	5117	77	61	9	M10	83	3.000
125	182	7277	97	77	12	M10	83	3.500
131	182	7732	91	73	12	M10	83	3.600
137	182	8187	86	69	12	M10	83	3.900
142	212	10082	95	75	14	M10	83	4.400
147	273	13645	116	93	18	M10	83	4.600



Type 130



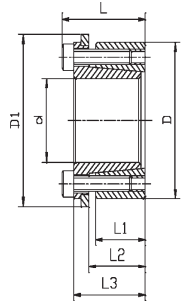
Designation	d	D	L ₁	L ₂	L ₃	L	Axial-force Ft*
	mm	mm	mm	mm	mm	mm	kN
130 019x047	19	47	26	31	39	45	32
130 020x047	20	47	26	31	39	45	32
130 022x047	22	47	26	31	39	45	32
130 024x050	24	50	26	31	39	45	49
130 025x050	25	50	26	31	39	45	49
130 028x055	28	55	26	31	39	45	49
130 030x055	30	55	26	31	39	45	49
130 032x060	32	60	26	31	39	45	65
130 035x060	35	60	26	31	39	45	65
130 038x065	38	65	26	31	39	45	65
130 040x065	40	65	26	31	39	45	65
130 042x075	42	75	30	36	47	55	87
130 045x075	45	75	30	36	47	55	87
130 048x080	48	80	30	36	47	55	87
130 050x080	50	80	30	36	47	55	87
130 055x085	55	85	30	36	47	55	117
130 060x090	60	90	30	36	47	55	117
130 065x095	65	95	30	36	47	55	117
130 070x110	70	110	40	46	62	72	188
130 075x115	75	115	40	46	62	72	188
130 080x120	80	120	40	46	62	72	188
130 085x125	85	125	40	46	62	72	188

Order: 130 dxD (e.g.: 130 040x065)
 Required surface quality:friction coefficient $\mu \geq 0.12$
 Surface roughness Rz ≥ 16
 Shaft/hub h8/H8
 Locking screws DIN912-12.9
 *) at Mt = 0
 **) at Ft = 0
 Dimensions may change according to position of screws.

Torque Mt**	Contact pressure shaft P	Contact pressure hub P ₁	Lockings screws qty.	Lockings screws size	Lockings screws tightening torque Ts	Weight
	N/mm ²	N/mm ²			Nm	kg
309	202	82	4	M 6	17	0.4
325	192	82	4	M 6	17	0.4
357	175	82	4	M 6	17	0.4
585	240	115	6	M 6	17	0.4
609	231	115	6	M 6	17	0.4
682	206	105	6	M 6	17	0.5
731	192	105	6	M 6	17	0.5
1039	240	128	8	M 6	17	0.5
1137	220	128	8	M 6	17	0.6
1234	202	118	8	M 6	17	0.6
1299	192	118	8	M 6	17	0.6
1837	213	120	6	M 8	41	1.0
1968	199	120	6	M 8	41	1.0
2099	187	112	6	M 8	41	1.1
2187	179	112	6	M 8	41	1.0
3207	217	141	8	M 8	41	1.1
3499	199	133	8	M 8	41	1.2
3790	184	126	8	M 8	41	1.3
6580	207	131	8	M10	83	2.2
7050	193	126	8	M10	83	2.5
7520	181	120	8	M10	83	2.6
7990	170	116	8	M10	83	2.8



Type 131



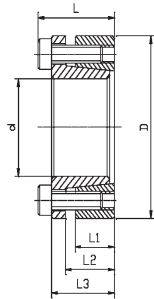
Designation	d	D	D ₁	L ₁	L ₂	L ₃	L
	mm	mm	mm	mm	mm	mm	mm
131 019x047	19	47	53	26	31	39	45
131 020x047	20	47	53	26	31	39	45
131 022x047	22	47	53	26	31	39	45
131 024x050	24	50	56	26	31	39	45
131 025x050	25	50	56	26	31	39	45
131 028x055	28	55	61	26	31	39	45
131 030x055	30	55	61	26	31	39	45
131 032x060	32	60	66	26	31	39	45
131 035x060	35	60	66	26	31	39	45
131 038x065	38	65	71	26	31	39	45
131 040x065	40	65	71	26	31	39	45
131 042x075	42	75	81	30	36	47	55
131 045x075	45	75	81	30	36	47	55
131 048x080	48	80	86	30	36	47	55
131 050x080	50	80	86	30	36	47	55
131 055x085	55	85	91	30	36	47	55
131 060x090	60	90	96	30	36	47	55
131 065x095	65	95	101	30	36	47	55
131 070x110	70	110	116	40	46	62	72
131 075x115	75	115	121	40	46	62	72
131 080x120	80	120	126	40	46	62	72
131 085x125	85	125	131	40	46	62	72

Order: 131 dxD (e.g.: 131 040x065)
 Required surface quality:friction coefficient $\mu \geq 0.12$
 Surface roughness Rz ≥ 16
 Shaft/hub h8/H8
 Locking screws DIN912-12.9
 *) at Mt = 0
 **) at Ft = 0
 Dimensions may change according to position of screws.

Axial-force Ft*	Torque Mt**	Contact pressure shaft P	Contact pressure hub P ₁	Lockings screws qty.	Lockings screws size	Lockings screws tightening torque Ts	Weight kg
kN	Nm	N/mm ²	N/mm ²			Nm	
21	197	129	52	4	M 6	17	0.4
21	207	123	52	4	M 6	17	0.5
21	228	111	52	4	M 6	17	0.5
31	373	153	74	6	M 6	17	0.5
31	388	147	74	6	M 6	17	0.5
31	435	131	67	6	M 6	17	0.6
31	466	123	67	6	M 6	17	0.6
41	663	153	82	8	M 6	17	0.7
41	725	140	82	8	M 6	17	0.6
41	787	129	75	8	M 6	17	0.8
41	829	123	75	8	M 6	17	0.6
56	1171	136	76	6	M 8	41	1.2
56	1255	127	76	6	M 8	41	1.1
56	1339	119	71	6	M 8	41	1.3
56	1395	114	71	6	M 8	41	1.1
74	2045	139	90	8	M 8	41	1.2
74	2231	127	85	8	M 8	41	1.3
74	2417	117	80	8	M 8	41	1.4
120	4197	132	84	8	M10	83	2.5
120	4497	123	80	8	M10	83	2.6
120	4796	115	77	8	M10	83	2.8
159	6743	144	98	10	M10	83	2.8



Type 132



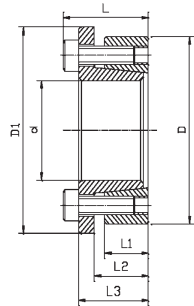
Designation	d	D	L ₁	L ₂	L ₃	L	Axial-force Ft*
	mm	mm	mm	mm	mm	mm	kN
132 018x047	18	47	17	22	28	34	33
132 019x047	19	47	17	22	28	34	33
132 020x047	20	47	17	22	28	34	33
132 022x047	22	47	17	22	28	34	33
132 024x050	24	50	17	22	28	34	40
132 025x050	25	50	17	22	28	34	40
132 028x055	28	55	17	22	28	34	40
132 030x055	30	55	17	22	28	34	40
132 032x060	32	60	17	22	28	34	54
132 035x060	35	60	17	22	28	34	54
132 038x065	38	65	17	22	28	34	54
132 040x065	40	65	17	22	28	34	54
132 042x075	42	75	20	25	33	41	87
132 045x075	45	75	20	25	33	41	87
132 048x080	48	80	20	25	33	41	87
132 050x080	50	80	20	25	33	41	87
132 055x085	55	85	20	25	33	41	100
132 060x090	60	90	20	25	33	41	100
132 065x095	65	95	20	25	33	41	112
132 070x110	70	110	24	30	40	50	159
132 075x115	75	115	24	30	40	50	159
132 080x120	80	120	24	30	40	50	159
132 085x125	85	125	24	30	40	50	178

Order: 132 dxD (e.g.: 132 040x065)
 Required surface quality:friction coefficient $\mu \geq 0.12$
 Surface roughness Rz ≥ 16
 Shaft/hub h8/H8
 Locking screws DIN912-12.9
 *) at Mt = 0
 **) at Ft = 0
 Dimensions may change according to position of screws.

Torque Mt**	Contact pressure shaft P	Contact pressure hub P ₁	Lockings screws qty.	Lockings screws size	Lockings screws tightening torque Ts	Weight
Nm	N/mm ²	N/mm ²			Nm	kg
301	336	129	5	M 6	14	0.30
318	318	129	5	M 6	14	0.30
334	302	129	5	M 6	14	0.30
368	275	129	5	M 6	14	0.30
482	302	145	6	M 6	14	0.30
502	290	145	6	M 6	14	0.30
562	259	132	6	M 6	14	0.40
602	242	132	6	M 6	14	0.30
856	302	161	8	M 6	14	0.40
936	277	161	8	M 6	14	0.40
1017	255	149	8	M 6	14	0.40
1070	242	149	8	M 6	14	0.40
1829	319	179	7	M 8	35	0.80
1960	298	179	7	M 8	35	0.60
2091	279	167	7	M 8	35	0.80
2178	268	167	8	M 8	35	0.80
2738	278	180	8	M 8	35	0.80
2987	255	170	8	M 8	35	0.80
3640	265	181	9	M 8	35	0.90
5550	290	185	8	M10	70	1.80
5946	271	177	8	M10	70	1.80
6343	254	169	8	M10	70	1.80
7581	269	183	9	M10	70	2.07



Type 133



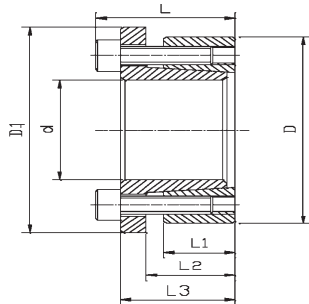
Designation	d	D	D ₁	L ₁	L ₂	L ₃	L
	mm	mm	mm	mm	mm	mm	
133 018x047	18	47	56	17	22	28	34
133 019x047	19	47	56	17	22	28	34
133 020x047	20	47	56	17	22	28	34
133 022x047	22	47	56	17	22	28	34
133 024x050	24	50	59	17	22	28	34
133 025x050	25	50	59	17	22	28	34
133 028x055	28	55	64	17	22	28	34
133 030x055	30	55	64	17	22	28	34
133 032x060	32	60	69	17	22	28	34
133 035x060	35	60	69	17	22	28	34
133 038x065	38	65	74	17	22	28	34
133 040x065	40	65	74	17	22	28	34
133 042x075	42	75	84	20	25	33	41
133 045x075	45	75	84	20	25	33	41
133 048x080	48	80	89	20	25	33	41
133 050x080	50	80	89	20	25	33	41
133 055x085	55	85	94	20	25	33	41
133 060x090	60	90	99	20	25	33	41
133 065x095	65	95	104	20	25	33	41
133 070x110	70	110	119	24	30	40	50
133 075x115	75	115	124	24	30	40	50
133 080x120	80	120	129	24	30	40	50
133 085x125	85	125	134	24	30	40	50

Order: 133 dxD (e.g.: 133 040x065)
 Required surface quality:friction coefficient $\mu \geq 0.12$
 Surface roughness Rz ≥ 16
 Shaft/hub h8/H8
 Locking screws DIN912-12.9
 *) at Mt = 0
 **) at Ft = 0
 Dimensions may change according to position of screws.

Axial-force Ft*	Torque Mt**	Contact pressure shaft P	Contact pressure hub P ₁	Lockings screws qty.	Lockings screws size	Lockings screws tightening torque Ts	Weight kg
kN	Nm	N/mm ²	N/mm ²			Nm	
26	233	260	100	5	M 6	17	0.300
26	246	247	100	5	M 6	17	0.300
26	259	234	100	5	M 6	17	0.300
26	285	213	100	5	M 6	17	0.300
31	373	234	112	6	M 6	17	0.300
31	388	225	112	6	M 6	17	0.300
31	435	201	102	6	M 6	17	0.400
31	466	187	102	6	M 6	17	0.400
41	663	234	125	8	M 6	17	0.400
41	725	214	125	8	M 6	17	0.400
41	787	197	115	8	M 6	17	0.500
41	829	187	115	8	M 6	17	0.500
65	1367	238	133	7	M 8	41	0.800
65	1464	222	133	7	M 8	41	0.700
65	1562	208	125	7	M 8	41	0.800
65	1627	200	125	7	M 8	41	0.800
74	2045	208	135	8	M 8	41	0.900
74	2231	191	127	8	M 8	41	0.900
84	2719	198	135	9	M 8	41	1.000
120	4197	220	140	8	M10	83	1.900
120	4497	205	134	8	M10	83	2.000
120	4796	192	128	8	M10	83	2.000
135	5733	203	138	9	M10	83	2.070



Type 134



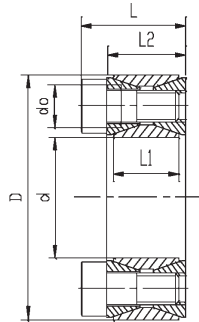
Designation	d	D	D ₁	L ₁	L ₂	L ₃	L
	mm	mm	mm	mm	mm	mm	mm
134 014x055	14	55	62	17	22	31	38
134 016x055	16	55	62	17	22	31	38
134 018x055	18	55	62	17	22	31	38
134 019x055	19	55	62	17	22	31	38
134 020x055	20	55	62	17	22	31	38
134 022x055	22	55	62	17	22	31	38
134 024x055	24	55	62	17	22	31	38
134 025x055	25	55	62	17	22	31	38
134 028x055	28	55	62	17	22	31	38
134 030x055	30	55	62	17	22	31	38
134 024x065	24	65	72	17	22	31	38
134 025x065	25	65	72	17	22	31	38
134 028x065	28	65	72	17	22	31	38
134 030x065	30	65	72	17	22	31	38
134 032x065	32	65	72	17	22	31	38
134 035x065	35	65	72	17	22	31	38
134 038x065	38	65	72	17	22	31	38
134 040x065	40	65	72	17	22	31	38
134 030x080	30	80	87	20	25	33	41
134 032x080	32	80	87	20	25	33	41
134 035x080	35	80	87	20	25	33	41
134 038x080	38	80	87	20	25	33	41
134 040x080	40	80	87	20	25	33	41
134 042x080	42	80	87	20	25	33	41
134 045x080	45	80	87	20	25	33	41
134 048x080	48	80	87	20	25	33	41
134 050x080	50	80	87	20	25	33	41

Order: 134 dxD (e.g.: 134 040x065)
 Required surface quality: friction coefficient $\mu \geq 0.12$
 Surface roughness Rz ≥ 16
 Shaft/hub h8/H8
 Locking screws DIN912-12.9
 *) at Mt = 0
 **) at Ft = 0
 Dimensions may change according to position of screws.

Axial force Ft*	Torque Mt**	Contact pressure shaft P	Contact pressure hub P ₁	Lockings screws qty.	Lockings screws size	Lockings screws tightening torque Ts	Weight kg
kN	Nm	N/mm ²	N/mm ²			Nm	
21	145	267	68	4	M8	41	0.480
22	175	248	72	4	M8	41	0.470
23	208	233	76	4	M8	41	0.500
24	228	228	79	4	M8	41	0.460
24	244	221	80	4	M8	41	0.500
25	273	204	82	4	M8	41	0.440
26	312	196	86	4	M8	41	0.420
27	341	197	90	4	M8	41	0.410
29	405	187	95	4	M8	41	0.390
30	452	182	99	4	M8	41	0.400
31	372	234	86	5	M8	41	0.620
33	407	235	91	5	M8	41	0.610
34	477	220	95	5	M8	41	0.580
36	542	218	101	5	M8	41	0.600
38	603	213	105	5	M8	41	0.550
39	687	203	109	5	M8	41	0.500
41	775	194	114	5	M8	41	0.480
42	847	192	118	5	M8	41	0.500
43	651	222	83	7	M8	41	1.000
46	729	219	88	7	M8	41	0.990
48	835	210	92	7	M8	41	0.960
51	962	205	97	7	M8	41	0.920
53	1056	203	101	7	M8	41	0.900
55	1154	201	106	7	M8	41	0.860
57	1285	195	110	7	M8	41	0.800
59	1423	190	114	7	M8	41	0.760
61	1537	189	118	7	M8	41	0.800



Type 200



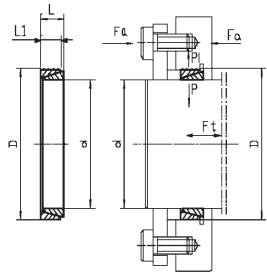
Designation	d	D	L ₁	L ₂	L	Axial force Ft*
	mm	mm	mm	mm	mm	kN
200 020x047	20	47	17	20	26	32
200 022x047	22	47	17	20	26	32
200 024x050	24	50	17	20	26	36
200 025x050	25	50	17	20	26	36
200 028x055	28	55	17	20	26	40
200 030x055	30	55	17	20	26	40
200 032x060	32	60	17	20	26	47
200 035x060	35	60	17	20	26	47
200 038x065	38	65	17	20	26	55
200 040x065	40	65	17	20	26	55
200 042x075	42	75	20	24	32	79
200 045x075	45	75	20	24	32	79
200 048x080	48	80	20	24	32	79
200 050x080	50	80	20	24	32	79
200 055x085	55	85	20	24	32	92
200 060x090	60	90	20	24	32	92
200 065x095	65	95	20	24	32	105
200 070x110	70	110	24	28	38	145
200 075x115	75	115	24	28	38	145
200 080x120	80	120	24	28	38	145
200 085x125	85	125	24	28	38	166
200 090x130	90	130	24	28	38	166
200 095x135	95	135	24	28	38	186
200 100x145	100	145	29	33	45	209
200 110x155	110	155	29	33	45	209
200 120x165	120	165	29	33	45	239
200 130x180	130	180	34	38	50	298
200 140x190	140	190	34	38	50	328
200 140x200	150	200	34	38	50	358

Order: 200 dxD (e.g.: 200 040x065)
 Required surface quality: friction coefficient $\mu \geq 0.12$
 Surface roughness Rz ≥ 16
 Shaft/hub h8/H8
 Locking screws DIN912-12.9
 *) at Mt = 0
 **) at Ft = 0
 Dimensions may change according to position of screws.

Torque Mt**	Contact pressure shaft P	Contact pressure hub P ₁	Lockings screws qty.	Lockings screws size	Lockings screws tightening torque Ts	Weight
Nm	N/mm ²	N/mm ²			Nm	kg
317	258	110	8	M 6	17	0.2
348	234	110	8	M 6	17	0.2
427	242	116	9	M 6	17	0.3
445	232	116	9	M 6	17	0.3
554	230	117	10	M 6	17	0.3
594	215	117	10	M 6	17	0.3
760	242	129	12	M 6	17	0.3
831	221	129	12	M 6	17	0.3
1053	237	139	14	M 6	17	0.4
1108	226	139	14	M 6	17	0.3
1659	260	146	12	M 8	38	0.6
1778	243	146	12	M 8	38	0.6
1897	228	137	12	M 8	38	0.6
1976	219	137	12	M 8	38	0.6
2535	232	150	14	M 8	38	0.6
2766	213	142	14	M 8	38	0.7
3424	224	153	16	M 8	38	0.7
5072	239	152	14	M10	75	1.3
5434	223	145	14	M10	75	1.3
5796	209	139	14	M10	75	1.4
7038	225	153	16	M10	75	1.4
7452	212	147	16	M10	75	1.5
8850	226	159	18	M10	75	1.6
10435	199	137	14	M10	130	2.2
11478	181	129	14	M12	130	2.5
14310	190	138	16	M12	130	2.6
19379	187	135	20	M12	130	3.8
22956	191	141	22	M12	130	3.9
26832	194	146	24	M12	130	4.0



Type 300



Designation	d	D	L	L ₁	Tightening force F _a kN	Axial force F _t kN
	mm	mm	mm	mm		
300 006x009	6	9	4.5	3.7	10	1
300 007x010	7	10	4.5	3.7	11	1
300 008x011	8	11	4.5	3.7	12	1
300 009x012	9	12	4.5	3.7	13	1
300 010x013	10	13	4.5	3.7	14	1
300 012x015	12	15	4.5	3.7	17	2
300 013x016	13	16	4.5	3.7	20	2
300 014x018	14	18	6.3	5.3	28	3
300 015x019	15	19	6.3	5.3	30	3
300 016x020	16	20	6.3	5.3	32	3
300 017x021	17	21	6.3	5.3	33	3
300 018x022	18	22	6.3	5.3	34	3
300 019x024	19	24	6.3	5.3	37	4
300 020x025	20	25	6.3	5.3	38	4
300 022x026	22	26	6.3	5.3	40	4
300 024x028	24	28	6.3	5.3	43	5
300 025x030	25	30	6.3	5.3	46	5
300 028x032	28	32	6.3	5.3	50	5
300 030x035	30	35	6.3	5.3	53	6
300 032x036	32	36	6.3	5.3	56	6
300 035x040	35	40	7.0	6.0	69	8
300 036x042	36	42	7.0	6.0	71	8
300 038x044	38	44	7.0	6.0	75	8
300 040x045	40	45	8.0	6.6	86	10
300 042x048	42	48	8.0	6.6	91	10
300 045x052	45	52	10.0	8.6	128	14
300 048x055	48	55	10.0	8.6	136	15
300 050x057	50	57	10.0	8.6	141	16
300 055x062	55	62	10.0	8.6	154	17
300 056x064	56	64	12.0	10.4	183	20
300 060x068	60	68	12.0	10.4	203	23
300 063x071	63	71	12.0	10.4	211	23
300 065x073	65	73	12.0	10.4	219	24

Order: 300 dxD (e.g.: 300 040x045)
 Required surface quality: friction coefficient $\mu \geq 0.12$
 Surface roughness Rz ≥ 16
 Shaft/hub h8/H8
 *) at Mt = 0
 **) at Ft = 0
 Dimensions may change according to position of screws.

Torque Mt**	Contact pressure	Contact pressure	Weight
	shaft P	hub P ₁	
Nm	N/mm ²	N/mm ²	kg
2	100	73	0.002
3	100	70	0.002
4	100	73	0.002
7	100	77	0.002
7	100	77	0.002
10	100	80	0.002
13	100	80	0.002
19	100	78	0.005
22	100	79	0.005
25	100	80	0.006
29	100	83	0.006
31	100	82	0.007
35	100	79	0.007
38	100	80	0.009
46	100	85	0.008
55	100	86	0.008
60	100	83	0.009
75	100	88	0.010
86	100	86	0.011
98	100	89	0.011
133	100	88	0.016
140	100	86	0.019
157	100	86	0.021
191	100	89	0.021
210	100	88	0.026
315	100	87	0.045
358	100	87	0.045
388	100	88	0.045
470	100	89	0.049
580	100	88	0.070
676	100	88	0.070
715	100	89	0.080
794	100	89	0.090

