

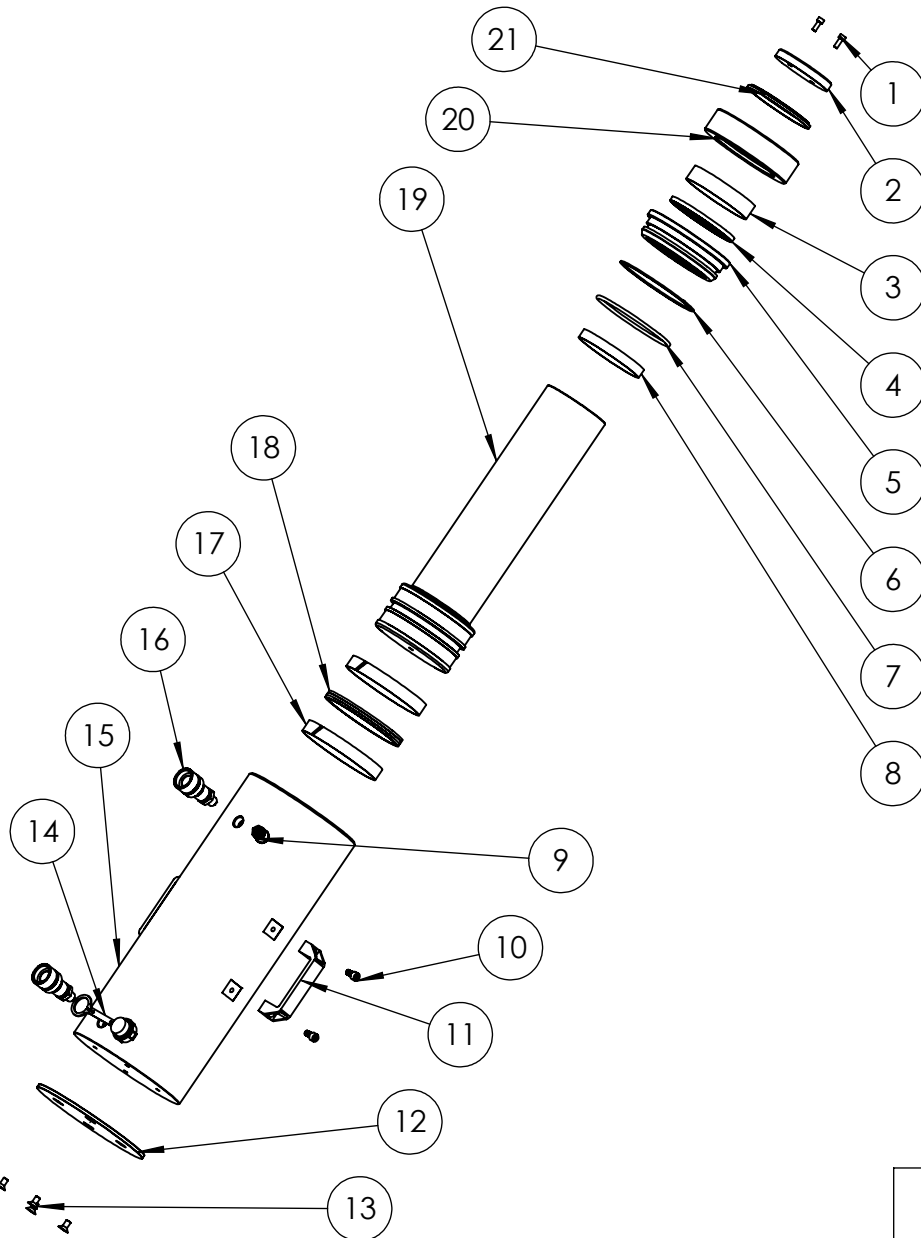
ITEM NO.	PART NUMBER	DESCRIPTION	QTY.	SERVICE PARTS
1	BLC006JD016	SOCKET CAP HD SCREW	2	
2	HA100	SADDLE	1	
3	BSC110PE001	BEARING	1	
4	SEC110GE001	ROD SEAL	1	✓
5	SSC140EA005	SEAL RETAINER	1	
6	SEC140BA001	BACK UP RING	1	✓
7	SEC140RA001	O-RING	1	✓
8	BSC110PE002	BEARING	1	
9	VRA001AF002	RELIEF VALVE	1	
10	BLC008KY016	STAINLESS STEEL M8 X 16 CAP HEAD SCREW	4	
11	HLC065AL001	HANDLE	2	
12	SFC202JC001	BASE PLATE	1	
13	BLC008KF016	COUNTERSUNK SCREW	4	
14	PPC1	DUST COVER	2	
15	CBC140VN002	CYLINDER	1	
16	CF1	COUPLER	2	
17	BSC140PD001	BEARING	2	
18	SEC140GA002	PISTON SEAL	1	✓
19	PRC140YN002	PISTON	1	
20	SRC110SM001	STOP RING	1	
21	SEC110XE001	WIPER	1	✓

NOTE:

ITEMS MARKED ✓ FOUND IN HRA100TP2-K ONLY

IMPORTANT

WHEN ORDERING SPARES YOU MUST STATE THE FULL PART NUMBER AND THE PRODUCT SERIAL NUMBER - FROM THE LABEL TO PROTECT YOUR WARRANTY ALWAYS USE GENUINE HI-FORCE PARTS.



REVISION

1	5487
2	5551
3	5800
4	
5	
6	
7	
8	
9	
10	
11	
12	
13	
14	
15	
16	
17	
18	
19	
20	