

ITEM NO.	PART NUMBER	DESCRIPTION	QTY.
1	CBC280JK002	CYLINDER	1
2	X	PISTON SEAL	1
3	PRC280HK002	PISTON.	1
4	X	ROD WIPER	1
5	SSC280CA002	SEAL RETAINER	1
6	X	O - RING	1
7	X	O - RING	1
8	X	BACK UP RING	1
9	X	BACK UP RING	1
10	SFC185VB002	CENTRE TUBE.	1
11	SRC254WU001	STOP RING	1
12	SAC150HT002	SADDLE.	1
13	STC230HH002	BASE WASHER.	1
14	STC230BX001	CIRCLIP.	1
15	X	ROD WIPER	1
16	X	ROD SEAL	1
17	X	ROD SEAL	1
18	PPC1	DUST COVER	2
19	BS4278-M16	EYEBOLT	2
20	CF1	COUPLER	2
21	VRA700AF002	RELIEF VALVE	1
22	X	DOWTY WASHER	1

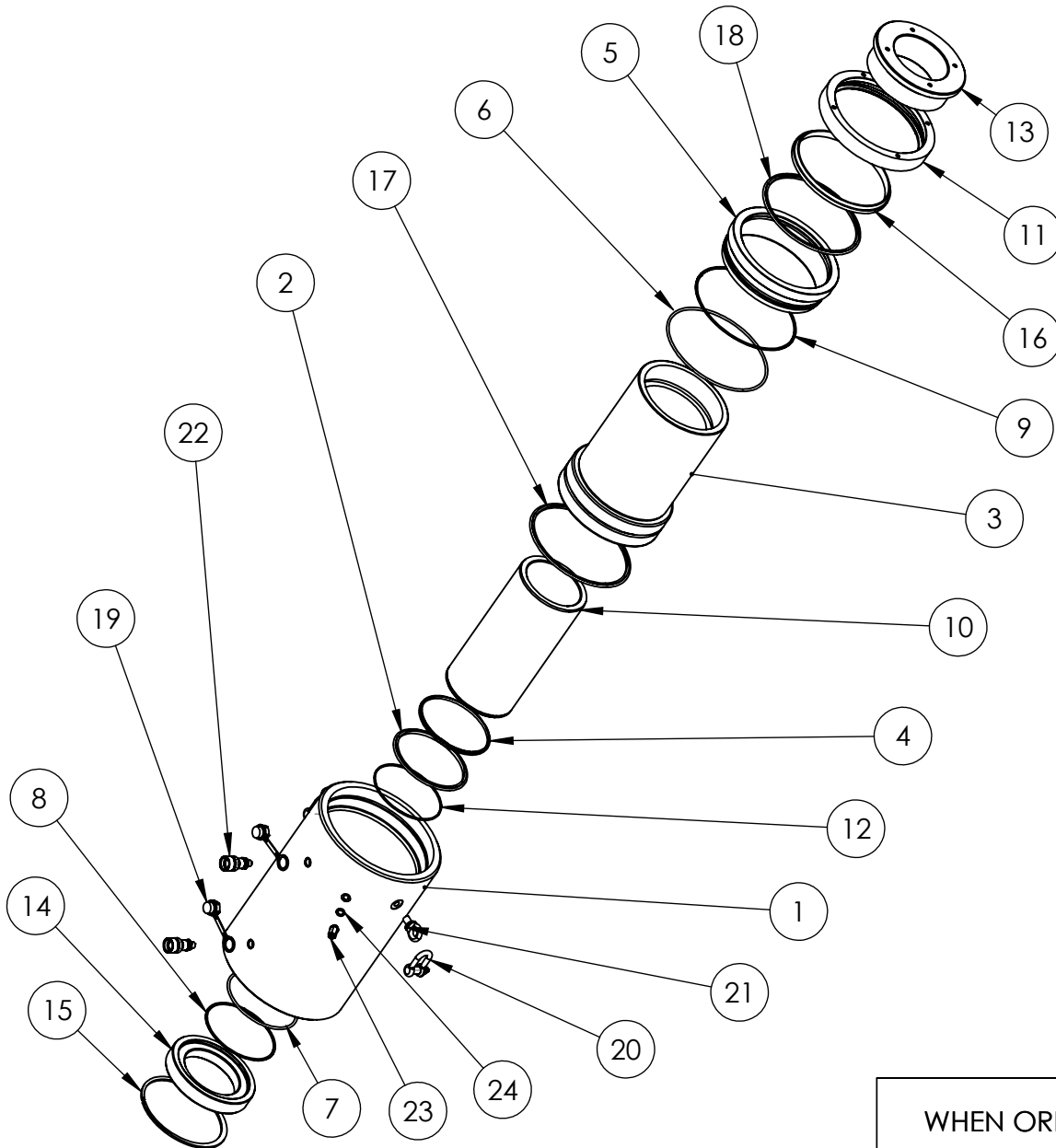
DRAWING
CHANGE

1	
2	2890
3	
4	
5	
6	
7	
8	
9	
10	
11	
12	
13	
14	
15	
16	
17	
18	
19	
20	

PARTS MARKED 'X' SUPPLIED IN
KIT HHR250TP2-K ONLY

IMPORTANT

WHEN ORDERING SPARES YOU MUST STATE THE FULL PART NUMBER AND THE
PRODUCT SERIAL NUMBER - FROM THE LABEL
TO PROTECT YOUR WARRANTY ALWAYS USE GENUINE HI-FORCE PARTS.



ITEM NO.	PART NUMBER	DESCRIPTION	QTY.
1	CBC280JK001	CYLINDER	1
2	X	SEAL.	1
3	PRC280HK001	PISTON.	1
4	X	WIPER.	1
5	SSC280CA001	SEAL RETAINER FOR HHR2508	1
6	X	O - RING	1
7	X	O - RING	1
8	X	BACK UP RING	1
9	X	BACK UP RING	1
10	SFC185VB001	CENTRE TUBE.	1
11	SRC300WU001	STOP RING FOR HHR2508	1
12	STC185HW001	RETAINER CLIP.	1
13	SAC150HT001	SADDLE.	1
14	STC230HH001	BASE WASHER.	1
15	STC230BX001	CIRCLIP.	1
16	X	WIPER	1
17	X	PISTON SEAL.	1
18	X	ROD SEAL.	1
19	PPC1	DUST COVER	2
20	BS3032-1T	SHACKLE	2
21	BS4278-M16	EYEBOLT	2
22	CF1	COUPLER	2
23	VRA700AF002	RELIEF VALVE	1
24	X	DOWTY WASHER	1

DRAWING CHANGE

1
2
3
4
5
6
7
8
9
10
11
12
13
14
15
16
17
18
19
20

PARTS MARKED 'X' SUPPLIED IN KIT HHR250TP1-K ONLY.

IMPORTANT

WHEN ORDERING SPARES YOU MUST STATE THE FULL PART NUMBER AND THE PRODUCT SERIAL NUMBER - FROM THE LABEL TO PROTECT YOUR WARRANTY ALWAYS USE GENUINE HI-FORCE PARTS.