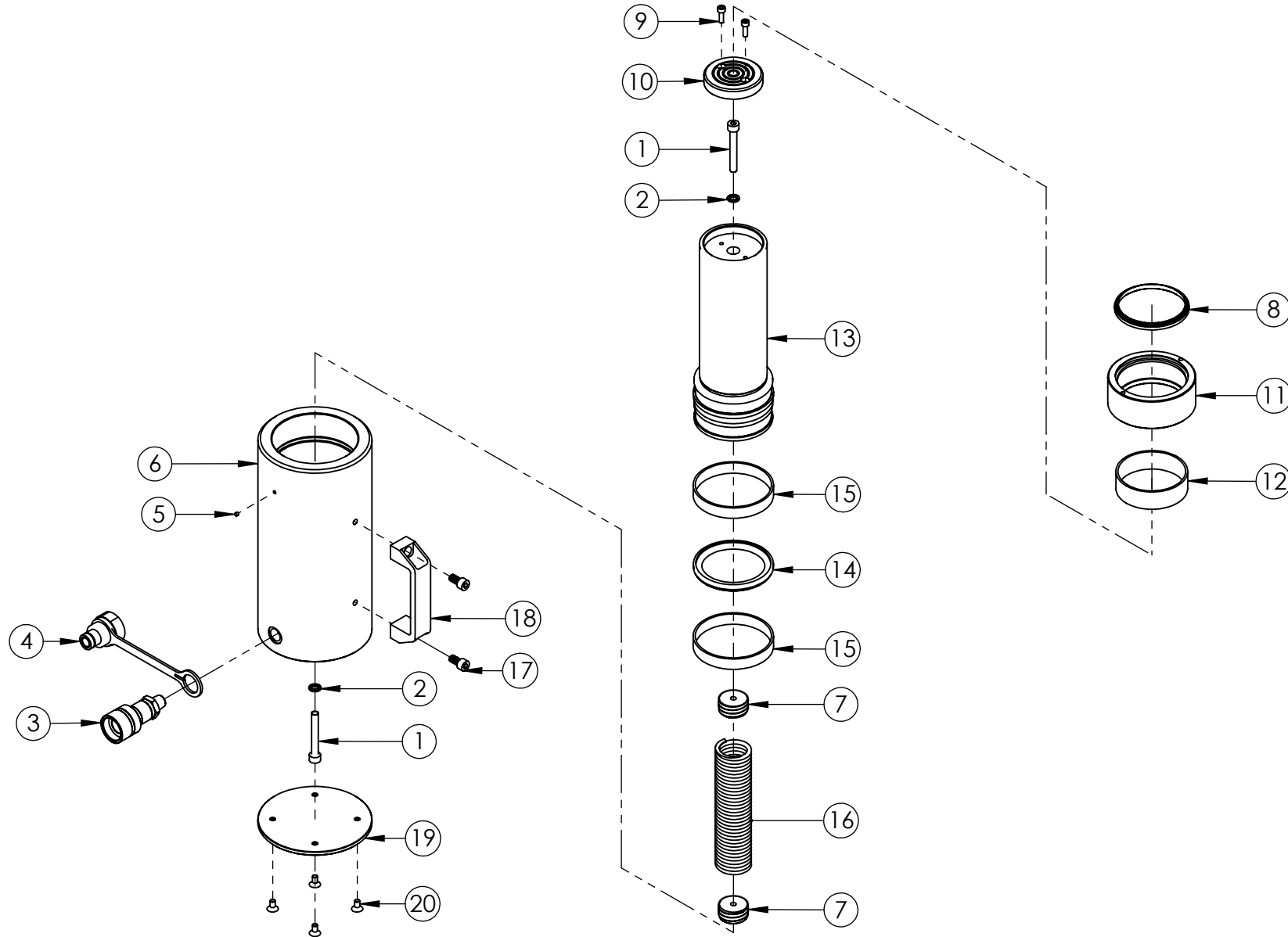


REVISION

1	3921
2	5784
3	6163
4	
5	
6	
7	
8	
9	
10	
11	
12	
13	
14	
15	
16	
17	
18	
19	
20	



IMPORTANT
WHEN ORDERING SPARES YOU MUST STATE THE FULL PART NUMBER AND THE PRODUCT SERIAL NUMBER - FROM THE LABEL TO PROTECT YOUR WARRANTY ALWAYS USE GENUINE HI-FORCE PARTS.

ITEM NO.	PART NUMBER	DESCRIPTION	QTY.	SPARE PARTS	SERVICE PARTS
1	BLC008KD060	M8 x 60 HEX SOCKET CAP HEAD SCREW	2		
2	WAC008KD000	DOWTY WASHER	2		✓
3	CF1	COUPLER	1		
4	PPC1	DUST COVER	1		
5	FFC004RC001	FILTER	1		
6	CBC095VH001	CYLINDER	1		
7	SIC033TC001	SPRING INSERT	2		
8	SEC080XE001	WIPER	1		✓
9	BLC005HD016	M5 x 15 HEX SOCKET CAP HEAD SCREW	2		
10	HA50	SADDLE.	1		
11	SRC080SJ001	STOP RING	1		
12	BSC080PE001	BEARING	1		
13	PRC095YH001	PISTON	1		
14	SEC095PA001	STEP SEAL	1		✓
15	BSC095PC001	BEARING	2		
16	SPC043TG001	TENSION SPRING	1		
17	BLC008KY016	STAINLESS STEEL M8 X 16 CAP HEAD SCREW	2		
18	HLC065AL001	HANDLE	1		
19	SFC135HA001	BASE PLATE	1		
20	BLC006JE012	M6 x 12 HEX SOCKET COUNTERSUNK SCREW	4		

REVISION

1	3921
2	5784
3	6163
4	
5	
6	
7	
8	
9	
10	
11	
12	
13	
14	
15	
16	
17	
18	
19	
20	

NOTES:

- ALL PARTS ARE AVAILABLE TO BE ORDERED AS SPARE PARTS (UNLESS MARKED WITH **x**).

- ONLY PARTS MARKED WITH ✓ ARE AVAILABLE AS BOTH SPARE PARTS OR SERVICEABLE PARTS, FROM HAS50TP1-K SERVICE KIT. (REFER TO HAS50TP1-K EVD FOR FULL PARTS LIST)

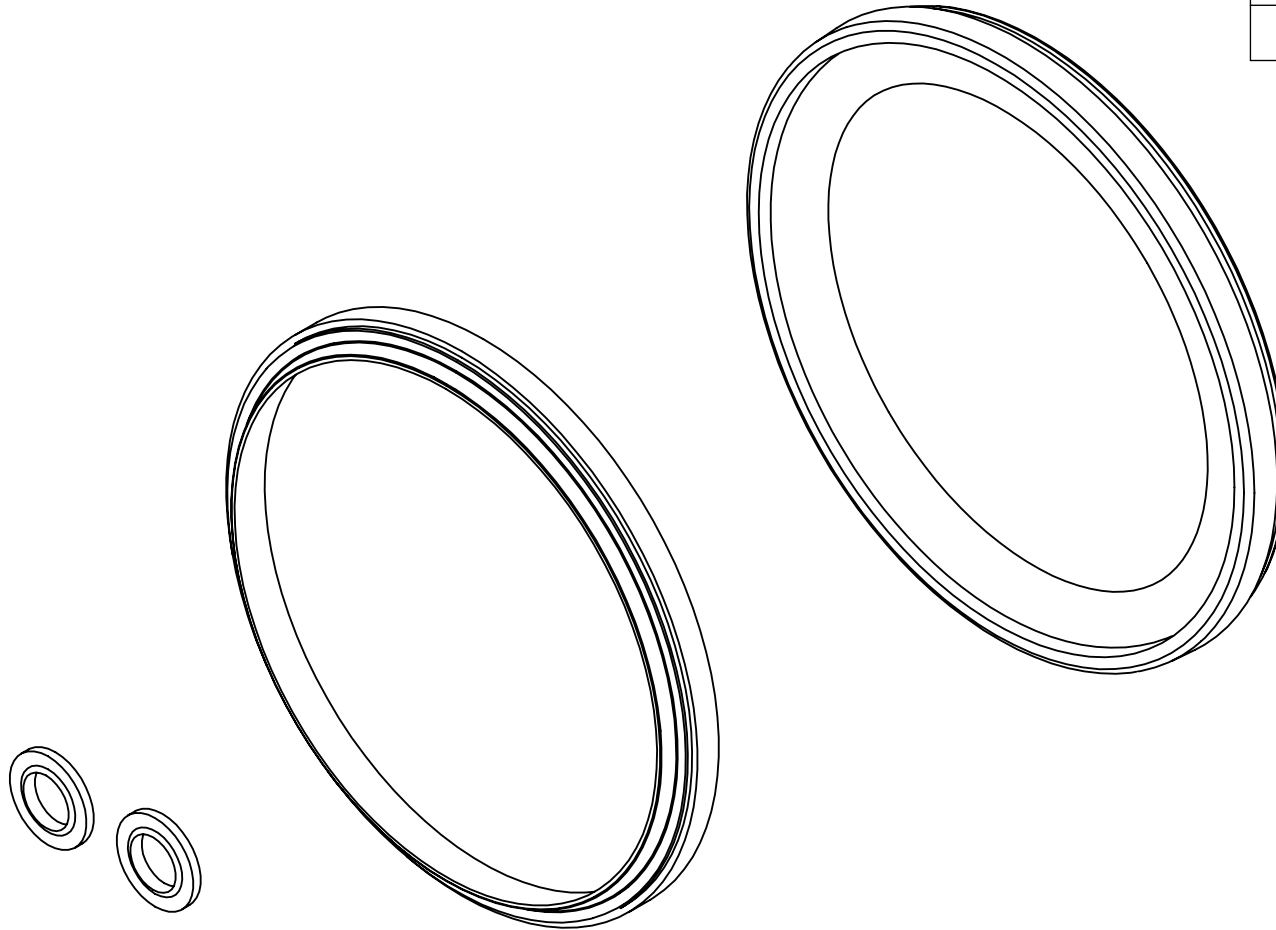
IMPORTANT

WHEN ORDERING SPARES YOU MUST STATE THE FULL PART NUMBER AND THE PRODUCT SERIAL NUMBER - FROM THE LABEL TO PROTECT YOUR WARRANTY ALWAYS USE GENUINE HI-FORCE PARTS.

REVISION

1	6163
2	
3	
4	
5	
6	
7	
8	
9	
10	
11	
12	
13	
14	
15	
16	
17	
18	
19	
20	

ITEM NO.	PART NUMBER	DESCRIPTION	QTY.
1	SEC080XE001	WIPER	1
2	SEC095PA001	STEP SEAL	1
3	WAC008KD000	DOWTY WASHER	2



IMPORTANT

WHEN ORDERING SPARES YOU MUST STATE THE FULL PART NUMBER AND THE PRODUCT SERIAL NUMBER - FROM THE LABEL TO PROTECT YOUR WARRANTY ALWAYS USE GENUINE HI-FORCE PARTS.