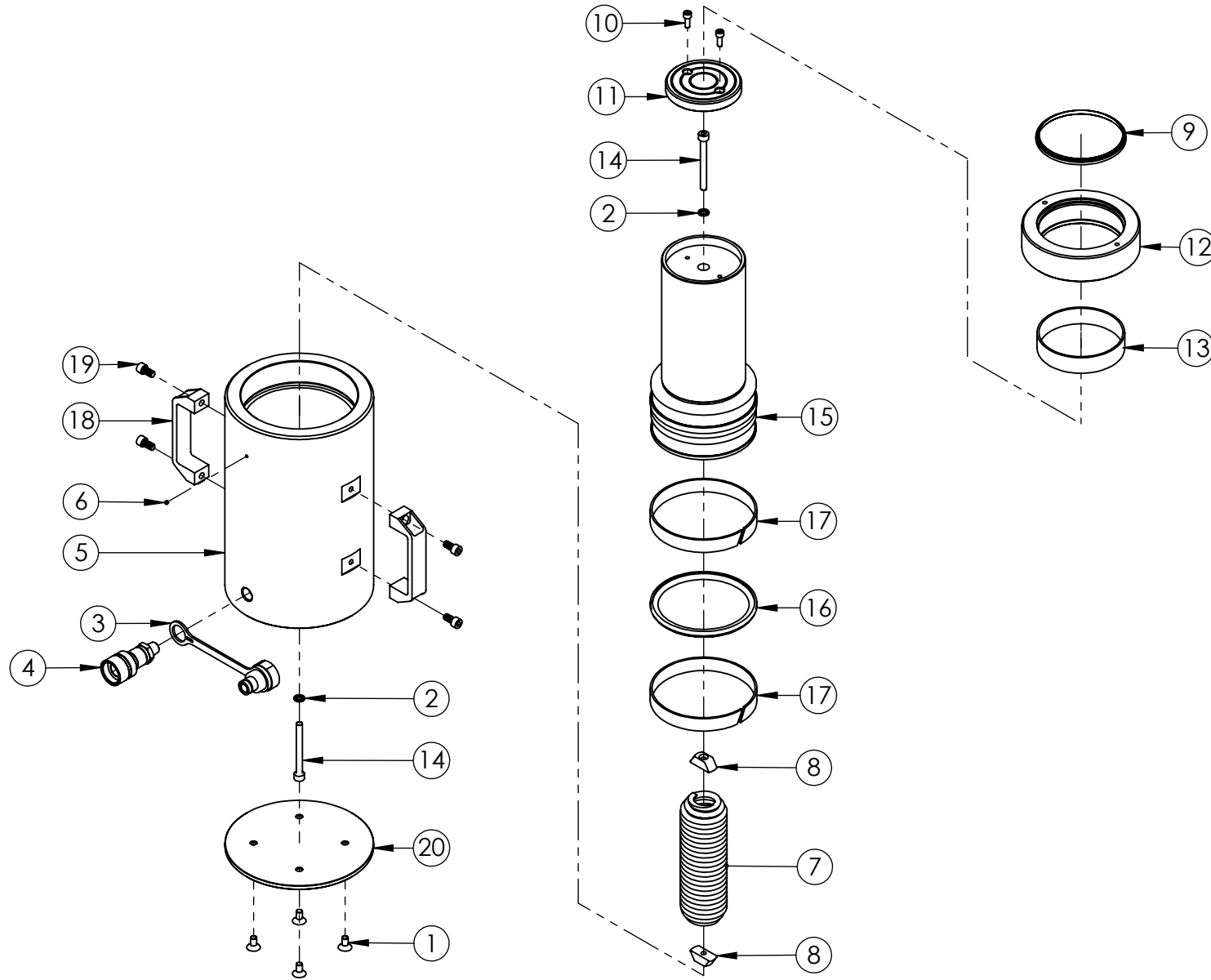


REVISION

1	3921
2	5784
3	6163
4	
5	
6	
7	
8	
9	
10	
11	
12	
13	
14	
15	
16	
17	
18	
19	
20	



IMPORTANT

WHEN ORDERING SPARES YOU MUST STATE THE FULL PART NUMBER AND THE PRODUCT SERIAL NUMBER - FROM THE LABEL TO PROTECT YOUR WARRANTY ALWAYS USE GENUINE HI-FORCE PARTS.

ITEM NO.	PART NUMBER	DESCRIPTION	QTY.	SPARE PARTS	SERVICE PARTS
1	BLC008KF016	M8 x 16 COUNTERSUNK SOCKET HEAD SCREW	4		
2	WAC008KD000	DOWTY WASHER	2		✓
3	PPC1	DUST COVER	1		
4	CF1	COUPLER	1		
5	CBC140VH002	CYLINDER	1		
6	FFC004RC001	FILTER	1		
7	SPC063UG001	TENSION SPRING	1		
8	SIC015ED002	INSERT	2		
9	SEC110XE001	WIPER	1		✓
10	BLC006JD016	M6 x 16 HEX SOCKET CAP HEAD SCREW	2		
11	HA100	SADDLE	1		
12	SRC110SM001	STOP RING	1		
13	BSC110PE001	BEARING	1		
14	BLC008KD080	M8 x 80 HEX SOCKET CAP HEAD SCREW	2		
15	PRC140YH002	PISTON	1		
16	SEC140PA001	STEP SEAL	1		✓
17	BSC140PD001	BEARING	2		
18	HLC065AL001	HANDLE	2		
19	BLC008KY016	STAINLESS STEEL M8 X 16 CAP HEAD SCREW	4		
20	SFC195JB001	BASE PLATE	1		

REVISION

1	3921
2	5784
3	6163
4	
5	
6	
7	
8	
9	
10	
11	
12	
13	
14	
15	
16	
17	
18	
19	
20	

NOTES:

- ALL PARTS ARE AVAILABLE TO BE ORDERED AS SPARE PARTS (UNLESS MARKED WITH **x**).

- ONLY PARTS MARKED WITH ✓ ARE AVAILABLE AS BOTH SPARE PARTS OR SERVICEABLE PARTS, FROM HAS100TP1-K SERVICE KIT. (REFER TO HAS100TP1-K EVD FOR FULL PARTS LIST)

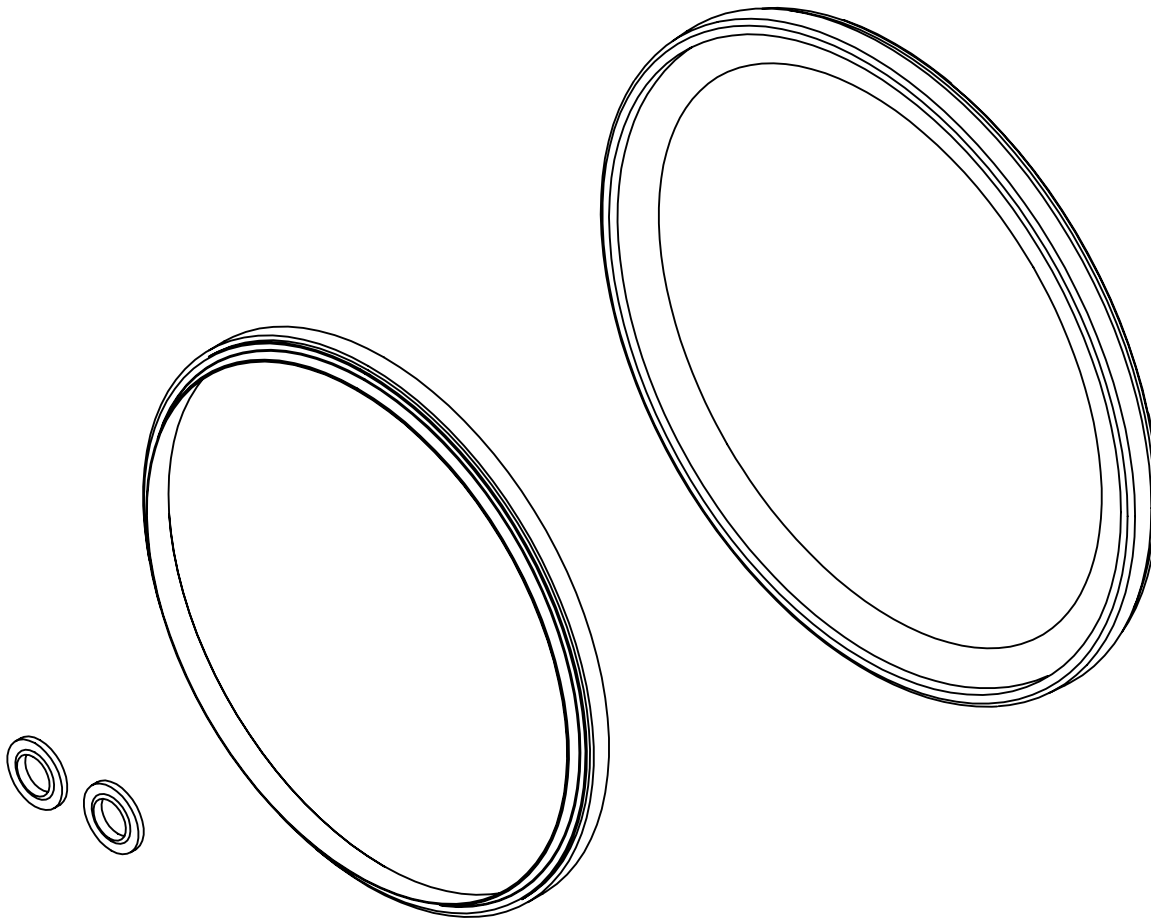
IMPORTANT

WHEN ORDERING SPARES YOU MUST STATE THE FULL PART NUMBER AND THE PRODUCT SERIAL NUMBER - FROM THE LABEL TO PROTECT YOUR WARRANTY ALWAYS USE GENUINE HI-FORCE PARTS.

REVISION

1	6163
2	
3	
4	
5	
6	
7	
8	
9	
10	
11	
12	
13	
14	
15	
16	
17	
18	
19	
20	

ITEM NO.	PART NUMBER	DESCRIPTION	QTY.
1	SEC110XE001	WIPER	1
2	SEC140PA001	STEP SEAL	1
3	WAC008KD000	DOWTY WASHER	2



IMPORTANT
WHEN ORDERING SPARES YOU MUST STATE THE FULL PART NUMBER AND THE
PRODUCT SERIAL NUMBER - FROM THE LABEL
TO PROTECT YOUR WARRANTY ALWAYS USE GENUINE HI-FORCE PARTS.